



WEEKLY WIRE



EDITOR: JENNIFER WOOD

WEEK 1 JANUARY 9-13, 2019

WELCOME TO THE 2019 WINTER EQUESTRIAN FESTIVAL

from Wellington Equestrian Partners



Palm Beach International Equestrian Center ©Sportfot

Welcome to the 2019 season of the Winter Equestrian Festival – we enthusiastically welcome back our exhibitors, their families, our loyal spectators, and our generous sponsors as we debut another 12 weeks of the world's top show jumping and equestrian competition.

Our mission to grow equestrian sport continues to deliver positive results and it is thanks to your support of our organization and your passion for the horse. For example, a 2017 study by the American Horse Council revealed that the U.S. equine industry is responsible for \$122 billion in economic impact across the country and 1.7 million jobs. Likewise, a 2018 study by the Palm Beach County Sports Commission during WEF showed that 94.3% of people surveyed reported the Winter Equestrian Festival as the main reason for their visit to Palm Beach. Our 2018 WEF season saw 42 countries represented and we look forward to welcoming even more riders from around the world in 2019.

We look forward to an incredible 2019 season and to showcasing new opportunities for competitors and spectators alike thanks to the dedication and ongoing support of our sponsors. The 2019 edition of WEF will once again feature many of the seasonal highlights that make these 12 weeks some of the best in the world. The \$75,000 Battle of the Sexes presented by Wellington Regional Medical Center will kick off competition on Saturday, January 12, before we welcome one of our favorite evenings just a few weeks later. The Great Charity Challenge

presented by Fidelity Investments® will take place this year on Saturday, February 2. With riders dressed up in costumes and horses adorned to match them, this year's theme of "We Are the World" will focus on promoting unity and celebrate the cultural differences in our community. Our four CSI 5* competitions each season will showcase the best of the best in our sport and are always the pinnacle of top competition during the circuit.

We are look forward to the return of the \$150,000 FEI Nations Cup on March 2, which is always a crowd favorite featuring enthusiastic international rivalry between teams and spectators. Several grass classes will be held again on the Derby Field this season, which riders also enjoy, and our young riders can experience the return of the popular Hermès U-25 Series.

Our season will conclude with the \$500,000 Rolex Grand Prix CSI 5* on Saturday, March 30, the most prestigious of classes hosted during the season.

Again, thank you for your continued support of WEF and your love of equestrian sport. We wish all our competitors this season the best of luck!

Sincerely,

Wellington Equestrian Partners

EQUESTRIAN SPORT PRODUCTIONS HOLDS OPENING CONFERENCE

for 2019 Winter Equestrian Festival and Adequan® Global Dressage Festival



Ann Caroline Valtin, Tinne Vilhelmson Silfven, Michael Stone, Mark Bellissimo, Adrienne Sternlicht, Liza Boyd, and Margie Engle at the WEF/AGDF opening press conference. ©Sportfot

Equestrian Sport Productions (ESP) once again hosted its annual opening press conference on Tuesday, January 8, at the Palm Beach International Equestrian Center (PBIEC) to welcome exhibitors and media to the 2019 show season. The conference panel comprised representatives from both the Winter Equestrian Festival (WEF) and the Adequan® Global Dressage Festival (AGDF).

WEF will be returning for its 40th season and will run for 12 consecutive weeks spanning from January 9 until March 31 and will offer elite hunter, jumper, and equitation competition. Top national and international dressage riders will return to AGDF for competition beginning January 10 until March 31.

Speakers included ESP CEO Mark Bellissimo, ESP's President Michael Stone, Olympian Margie Engle, three-time USHJA International Hunter Derby Championship winner Liza Boyd, 2018 FEI World Equestrian Games Show Jumping Team Gold medalist Adrienne Sternlicht, seven-time Swedish Olympic dressage competitor Tinne Vilhelmson Silfven, and Anne Caroline Valtin, Executive Director of the Great Charity Challenge, presented by Fidelity Investments®.

"I would like to say thank you to the athletes who are attending today. Without these athletes this wouldn't be a world-class venue and event, so thank you to the esteemed group," Bellissimo began. "This will be the 40th year of WEF and it is now the

world's largest festival centered around show jumping, dressage, and polo, so I think equestrianism in Wellington is alive and well and we are very excited about the future."

A fan favorite, the \$75,000 Battle of the Sexes will return as the first "Saturday Night Lights" of the 2019 season on Saturday, January 12. The multi-phase event, presented by Wellington Regional Medical Center, has provided a night of excitement and rivalry for many seasons. This year's event is sure to be well-attended after the men's team scored their first victory in Battle of the Sexes history in 2018.

During Week 4 of WEF, the Great Charity Challenge, presented by Fidelity Investments® will return for its tenth season. The event groups amateur and professional riders into teams with elaborate costume themes and has repeatedly engaged a large crowd. The event has raised over \$12.2 million to date and benefited more than 230 nonprofit organizations. "I'm very lucky I get to go to these non-profits and see the impact it has had on the community," stated Valtin. "This year we've already exceeded our target of distributing another \$1 million and we are still four weeks out."

The 2019 season will also offer an unprecedented amount of FEI events including four CSI 5* grand prix events during weeks 5, 7, 9 and featuring the \$500,000 Rolex Grand Prix CSI5* on week 12.

Please turn to page 4

WELLINGTON REGIONAL MEDICAL CENTER RETURNS

as a Proud Sponsor of WEF 1 to Kick Off the 2019 Season

Wellington Physicians Urgent Care, located at 13421 South Shore, Suite 101, Wellington, FL 33414, can be found directly across South Shore Boulevard from Equestrian Village and is open every day from 8 a.m. to 8 p.m., 365 days per year. The clinic is able to treat a variety of ailments including minor emergencies, specialized equestrian care, allergies, asthma, colds, cough, fever, flu, pneumonia, cuts, burns, sprains, fractures, infections, rashes, and sports injuries.

"We are proud to provide urgent care services that are convenient to the equestrian community. We have systems in place that allow for expedited service, with equestrian sport protocols in mind. With onsite x-ray and lab capabilities, as

well as concussion evaluation standards in place, we are able to address almost all urgent needs. If it is determined that further care be necessary in the emergency room, we are able to provide test results and information directly to Wellington Regional Medical Center, to further expedite care."

The Urgent Care is also equipped to provide several health and wellness needs, including flu shots, sports, school, and employment physicals, as well as lab and imaging services. The clinic is walk-in, and no appointments are necessary to be seen. Most insurance plans, including Medicare, will be accepted.

"We are incredibly fortunate to have Wellington Physicians

Urgent Care as a resource for our community's medical needs throughout the year," said Paige Bellissimo, Co-Founder of the Great Charity Challenge and an active equestrian living in Wellington. "The treatment and care are world-class and the doctors at Wellington Regional have helped me personally overcome physical injuries I've sustained with great results."

The Wellington Physicians Urgent Care walk-in clinic is staffed to strategically treat minor injuries, common illnesses, and specialized equestrian care. For more information on the Wellington Physicians Urgent Care, please visit www.urgentcarewellington.com or call (561) 440-1616.

PBIEC WEEK 1&2 UPCOMING EVENTS

LUNCH & LEARN SERIES

On Thursday, January 10, the Lunch & Learn Series begins for the 2019 season. Held every Thursday from 11:30 a.m. to 1 p.m. at The Wellington Club, this informational and educational series has a variety of subjects for horsemen and women to learn more for their horses. Admission is free for riders, trainers, and owners. Register at the door for a chance to win exciting prizes. The Week 1 Lunch & Learn is sponsored by Gold Coast Feed and Supply. Contact Kailey Blasius at 561-784-1137 or kblasius@equestriansport.com for more information.

ANN ROMNEY

The Ann Romney Center for Neurologic Diseases invites you to join Ann Romney and world-renowned medical experts from Brigham and Women's Hospital in Boston for a lively discussion about innovations in neurologic disease research and tips about how to maintain a healthy brain. The luncheon will be from 11:30 a.m.-1 p.m. on Friday, January 11, at The Wellington Club.

ADEQUAN® GLOBAL DRESSAGE FESTIVAL "FRIDAY NIGHT STARS"

AGDF's "Friday Night Stars" Series returns in 2019, showcasing some of the world's best dressage riders as they perform freestyles at the top level of competition. The first week of CDI-W competition will feature FEI World Cup qualifying grand prix musical freestyle competition presented by Wellington Agricultural Services on Friday, January 11. Held at Equestrian Village at the Palm Beach International Equestrian Center, gates open at 6 p.m. and competition begins at 7 p.m. General admission is free, parking is \$10 per car, and valet is available for \$20.

\$75,000 BATTLE OF THE SEXES, PRESENTED BY WELLINGTON REGIONAL MEDICAL CENTER

Watch the men compete against the women in the first "Saturday Night Lights" event of the circuit on Saturday, January 12, at 7 p.m. The women won the first eight years in a row, but the men captured their first standalone win in 2018. Wear pink or blue to show your support for your team of choice! In addition to show jumping, there will be live entertainment from the band Wonderama. Gates open at 6 p.m. General admission is free, parking is \$20 per car, and valet is available for \$30.

THE VEUVE CLICQUOT SUITES – AVAILABLE SATURDAY NIGHT!


Located in the Special Events Pavilion, The Veuve Clicquot Suites are first available on Saturday, January 12, and on select Saturday Night Lights events throughout WEF. Prime viewing, a full buffet, and premium bar options in a semi-private suite catered by White Horse Catering, this is the place to host friends and family or even a corporate get-together. Each suite accommodates up to 22 people. Availability is on first-come, first-served basis, so book now before they all fill up! Contact Patti Miele at 561-784-1125 or pmiele@equestriansport.com today.

\$75,000 ROSENBAUM PLLC GRAND PRIX

Watch some of show jumping's best horses and the riders compete in the first grand prix of the 2018 WEF circuit. Competition begins at 2:00 p.m. on Sunday, January 13, in the International Arena at PBIEC.

COMING UP IN WEEK 2!

Friends of Orphans Competition and Event Join riders from the Chateaublond Equestrian Center in Haiti for a luncheon and silent auction to benefit Chateaublond Equestrian Center in Haiti therapy program, which is dedicated to children with special needs, on Sunday, January 20, at 11 a.m. Contact Romy Tschudi for information and ticket purchase at 954-643-8678.



"Wellington Regional Medical Center Is My Hospital"

A career law enforcement professional, Ric Bradshaw grew up in the area, went to high school locally and attended college 20 miles away. In 1971, after serving in the U.S. Marines, he returned to his hometown and joined the West Palm Beach Police. He watched as the southwestern boundary of Palm Beach County flourished and as Wellington Regional Medical Center was built and opened.

"Wellington Regional Medical Center is an integral part of our community. It has been for 30 years. I see everyday that everyone at the hospital has a strong commitment to quality care and to delivering the highest level of service to the people in our community."

From emergency care, including an accredited Chest Pain Center with PCI and Resuscitation, comprehensive stroke services, to orthopedics, cancer services, weight-loss and lung programs, maternity care and a Level III NICU, Wellington Regional delivers comprehensive care for every member of the family.

"I can't think of this community without Wellington Regional Medical Center. I'm proud that Wellington Regional is MY HOSPITAL."

As a patient I know I will be treated with respect and get the best treatment.

~ Ric Bradshaw

See why Ric Bradshaw and other community leaders call Wellington Regional MY Hospital at wellingtonregional.com/myhospital

Your perfect venue awaits...



PALM BEACH INTERNATIONAL EQUESTRIAN CENTER
3400 Equestrian Club Drive
Wellington, Florida 33414
(561) 793-5867
pbiec.com



THE WANDERERS CLUB
1900 Aero Club Drive
Wellington, Florida 33414
(561) 795-3501
wanderersclubwellington.com



INTERNATIONAL POLO CLUB
3667 120th Avenue South
Wellington, Florida 33414
(561) 204-5687
internationalpoloclub.com



WELLINGTON CLUB | THE GALLERY
TIKI HUT | SPECIAL EVENTS PAVILION
TIKI HUT AT GLOBAL DRESSAGE FESTIVAL | GLOBAL PAVILION
THE VEUVE CLICQUOT SUITES



DUKE'S BAR | DUKE'S BAR VERANDA | STABLES RESTAURANT
POOLSIDE | BALLROOM



PAVILION AND SUNSET TERRACE | THE PATIO MALLET OR POOLSIDE
THE 7TH CHUKKER AND CHAMPIONSHIP TERRACE
THE VEUVE CLICQUOT LOUNGE

INTERNATIONAL POLO CLUB HAPPENINGS

The 2019 Polo season is in full swing at the International Polo Club Palm Beach, with matches running from Wednesday through Sunday at the venue. This week features the second round of the Joe Barry Memorial Cup with some of the best polo teams based in Wellington for the winter months competing for top honors.

The highlight match of the week will take place on Sunday, January 13, at 3 p.m. on Field 1 – home of U.S. Polo Assn. Join us for a delicious brunch in the Pavilion with tables overlooking the match or reserve a table in the brand-new Celebrity Cruises® Polo Lounge. Other ticket options include general admission, stadium seating, and tailgate spots. All tickets for Sunday can be purchased online at www.internationalpoloclub.com.

Also taking place this week at IPC is the Wanderers Club Cup low goal tournament. Amateur players will be competing on Friday, January 11, at 3 p.m. If you are interested in participating in the low goal league or would like to take a lesson at the Polo School at IPC, please contact Gates Gridley at 203-232-6935.

To purchase tickets to Sunday polo and brunch at The Pavilion, visit internationalpoloclub.com.



Lunch AND LEARN

WELLINGTON, FL

THURSDAY, JANUARY 10 AT 11:30AM

The Wellington Club

SPONSORED BY GOLD COAST FEED AND NUTRITION

Contact Kailey Blasius at 561-784-1137
kblasius@equestriansport.com for more information.

ADMISSION IS FREE.

PRESS CONFERENCE Continued from Page 1

Margie Engle, one of the USA's top riders and a local Wellington resident, is looking forward to being able to compete at the international level in her hometown.

"It's amazing to even have five-star events here in Wellington and it brings the best riders and competition from all over the world," Engle stated. "We never had that until just a few years ago, and as someone who's grown up here, it's amazing to see what it has grown into; the level of competition here is as good as anywhere in the world."

Bellissimo noted, "The five star weeks here are obviously the by-product of a great sponsorship portfolio and we've had a fantastic portfolio led by Rolex, who has been a tremendous sponsor for us for the past five years and will continue to do so. That is how we can get a lot of great energy around the prize money and the five-star status, so we are very grateful to them and very thankful for the strong sponsorship portfolio we have at WEF."

During the five-star weeks, exhibitors will also have the ability to compete in concurrent 2* classes which allows for both horses and riders of different levels to contest international competition.

"I'll be using this winter to build my string, taking some pressure off Crystalline," said Sternlicht of her WEG partner. "I have a new mare who will probably act as my top horse for the winter. Her name is Just A Gamble and I haven't shown her yet, so tomorrow we'll be making our debut. I hope to be jumping a lot of classes and Saturday night grand prix classes and getting used to these new horses."

With three USHJA International Hunter Derbies, three USHJA National Hunter Derbies, nine weeks of USHJA incentive programs for the 3'-3'9" Green Hunters, a pony hunter derby, and 12 weeks of Hunter Classics for the Small, Medium, and Large pony divisions, the circuit will also offer divisions for every level of hunter horse or pony. "There is so much great exposure for young riders and young horses at the top of the sport this year and we are so excited," commented Boyd. "I have two derby horses that I did well with last year that are both here, and a couple of young horses. But I am most excited to have some green ponies for my daughter to compete."

Guided by Bellissimo and President Michael Stone, WEF's 40th season looks to continue to improve on its previous successes. "We're not going to stand still. I think the way you improve is by analyzing every year what was good, what was bad, what we need to improve on," said Stone. "You need to be innovative and look at ways of making more interesting competitions and things to make it the equestrian lifestyle destination of the world."

ADEQUAN® GLOBAL DRESSAGE FESTIVAL BEGINS ON THURSDAY

The festival's long-running sponsor, Adequan®, is pleased to be returning as the title sponsor of the Global Dressage Festival for their seventh consecutive season.

"We are honored once again to return as the title sponsor of the 2019 Adequan® Global Dressage Festival," stated Allyn Mann, Director of Strategic Partnerships for Adequan®. "Throughout the inception of this venue, the dressage community has benefited immensely and it has changed the dynamics for dressage in the U.S. Our company is changing in some aspects as we have a new name, American Regent Animal Health, previously known as Luitpold Animal Health. Although the name has changed, our commitment to supporting the equestrian community is as strong as ever."

"We look forward to continuous support of AGDF, WEF, and many other venues and associations."

Thank you for all your support of our mainstay brand, Adequan® (polysulfated glycosaminoglycan). Good luck to all owners, riders and their horses for a successful season."

Seven-time Swedish Olympian Tinne Vilhelmsen Silfven has attended AGDF since its early beginnings and is pleased with how the show has cultivated dressage talent in the U.S.

"This is my ninth year competing here and I would say the competition has gone from zero to a very high degree of skill from other contenders, so it has changed tremendously," Silfven said. "Since I live far away from here, I think it's such a great way to prepare my horses for the season and keep them in great shape."

The team at Equestrian Sport Productions looks forward to welcoming the best in equestrian sport to both the 2019 Winter Equestrian Festival and 2019 Adequan® Global Dressage Festival. For more information and a full schedule of events, please visit www.PBIEC.com and www.GlobalDressageFestival.com.



WHERE YOUR NEIGHBORS BECOME FRIENDS & Friends Become Family

80,000 square foot clubhouse
2 championship golf courses
16 har-tru clay tennis courts
Fine and casual dining
Full service spa
Fitness center and group classes
Resort-style pool
Daily activities & events
Private gated community
Located within the Equestrian Community

COMING SOON
An \$18.2 million
Clubhouse Renovation

CALL 561-964-9200 TO EXPERIENCE THE WYCLIFFE LIFESTYLE FOR YOURSELF

Life as you want it to be.

WYCLIFFE
GOLF & COUNTRY CLUB

4650 Wycliffe Country Club Boulevard • Wellington, Florida 33449 • In the Palm Beaches
wycliffecc.com

These "highly creative lawyers" were hired to be a "wealth squad" in search of \$400 million hidden in "a system exquisitely engineered to repel scrutiny."

— NEW YORK TIMES

A firm "known for handling divorce cases of the wealthy in South Florida."

— WASHINGTON POST

FPH
FISHER | POTTER | HODAS

Fisher Potter Hodas, PL, is a law firm that concentrates its practice on complex, high-stakes divorce cases involving corporate executives, closely held business owners, professional athletes, celebrities, and wealthy families.

fisherpotterhodas.com | 561.832.1005
West Palm Beach

GIVE THEM THE BEST

GOLD COAST PROUDLY FEATURES:
Derby Gold Equine Bedding
Full line of equine supplements, grooming & barn supplies
Largest variety of quality hay in South Florida
FREE & PROMPT DELIVERY SERVICE

Now offering full line of quality Triple Crown Feed
Other feeds also available:
• Red Mills • Progressive Nutrition
• Emerald Valley • KER
• Nutrena® • Crypto Aero Whole Feed
• Hallway • Central States

GOLD COAST FEED & NUTRITION
Shavings, Feed and Hay for Maximum Performance
13501 South Shore Blvd., Wellington, FL 33414 • 561-793-4607

Adequan® Global Dressage Festival
January 9 - March 31, 2019

AGDF 1 CDL-W & National Show January 9-13	AGDF 6 National Show February 15-16	AGDF 9 CPEDI 3* & National Show March 7-10
AGDF 2 CPEDI 3* January 17-20	AGDF 7 CDI-W & National Show February 20-24	AGDF 10 CDIO 3* & National Show March 13-17
AGDF 3 CDL-W & National Show January 23-27	AGDF 8 Palm Beach Derby CDI-W & National Show February 27-March 3	AGDF 11 National Show March 23-24
AGDF 5 CDI 5* & National Show February 6-10	AGDF 12 CDI 4* & National Show March 26-31	

EQUESTRIAN VILLAGE AT PALM BEACH INTERNATIONAL EQUESTRIAN CENTER
13500 South Shore Blvd | Wellington, FL 33414 | globaldressagefestival.com

THE WANDERERS CLUB
A Perfect Blend of the Sporting Lifestyle & Family

JOIN NOW!

Wellington's Premier Golf, Tennis, Fitness & Polo Club

Enjoy year-round amenities including:

- Traditional golf with no tee times
- Casual dining at Stables Restaurant
- Tennis, fitness, junior Olympic-sized pool, kiddie pool and play area
- Year-round social calendar and child-friendly programs

To enroll or for more information call 561.795.3501 or email at membership@wanderersclubwellington.com

1900 AERO CLUB DRIVE • WELLINGTON, FL 33414
wanderersclubwellington.com

WEF SPORT HORSE AUCTION

Featuring **VOL 31st**

PREVIEW:
TUESDAY, FEBRUARY 19, 2019
at 3:00 p.m.

AUCTION:
THURSDAY, FEBRUARY 28, 2019
at 7:00 p.m.

For the complete schedule of events:
WEFSPOORTHORSEAUCTION.COM
Contact: melanie@horseemis.com
or call 561.870.6587

For horse trials and information, contact Janko van de Lageweg:
Cell: 0031-651815225 or 832.706.3407
e-mail: janko@vdlstud.com

Svensk Glen's Machu Pichu ridden by Paul O'Shea, graduate of 2011 auction.

Ferrara won Grand Prix in Caledon May 2018, 2nd twice and 3rd at Spruce Meadows Grand Prix, 2nd in Grand Prix Qualifier in Samorin, won 2 classes in Dublin and 2nd at Spruce Meadows Masters in Qualifier for winter round. Owned by Ariel Grange, graduate of 2016 auction.

SHELLI BREIDENBACH 2019 WEF Cover Artist

This year's WEF program cover pays tribute to the stunning Spanish Andalusian stallion, Presumido CIV. Photographed by Shelli Breidenbach, 10 year-old Presumido is a member of the P.R.E. (Purebred Spanish Horses) Breeder's Association. Owned by Wendy Inch of Ontario Canada, Presumido was the culmination of a lifelong search for her "dream horse." Wendy and her husband, Tim, are the owners of Sunny Acres, a Morgan horse farm in St. Thomas, Ontario. Though Wendy has been raising (and loving) Morgans since 1980, she really wanted to take her love of dressage to a higher level. When she was younger, she had always thought of the Andalusian as her version of a unicorn – totally magical.



In 2013, Wendy made the trip to Salamanca, Spain to meet her partner. Although he was one of many gorgeous stallions that she tried, it was love at first sight! Aside from his obvious physical presence, Wendy discovered that he was a wonderful combination of kind and sweet, followed by a curious intellect. His talent and willing partnership has made him everything Wendy had hoped for in a once in a lifetime horse partnership.

Today Wendy and Presumido spend their winters under the tutelage of Nicholas Fyffe of Marcus Fyffe

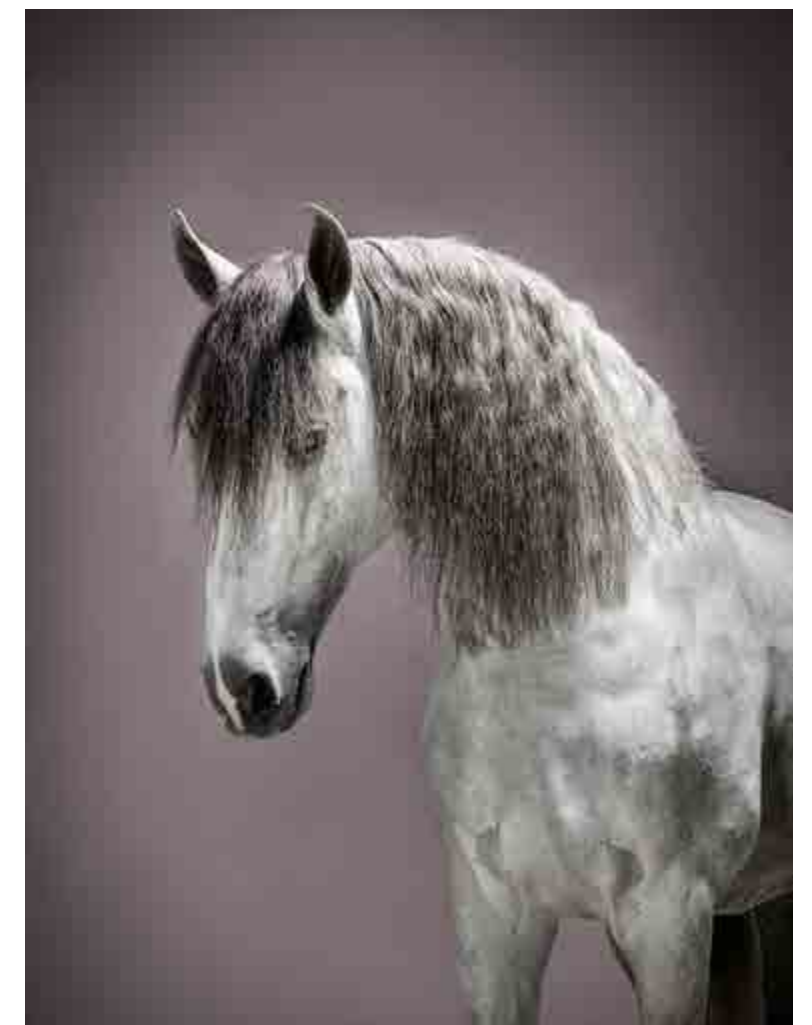
Dressage and their summers in Ontario. They are currently showing at third level and preparing for their upper levels, as Wendy knows that his talent and beauty are a special combination. For Wendy, he truly is everything she had hoped for when she first went looking for her "dream" horse.

Fine art photographer Shelli Breidenbach is celebrated worldwide for her compelling images. She focuses her lens on the details of majestic animals and stunning nature scenes to create bold and bright pictures that radiate positive energy.

Presumido's breathtaking beauty is what initially drew Breidenbach to him, but as she discovered through her interaction with him, his kindness and relationship with Wendy are what truly make him such a special and stunning horse.

Breidenbach has an intimacy with horses that gives her a unique level of trust and access, allowing her to capture intimate images against black, white and brilliantly colored backgrounds. She is renowned in the equestrian world for her portraits and dramatic blending of close ups and individual elements. In addition to her horse portraits, Shelli used her amazing eye and talent for capturing beauty in a clean and modern aesthetic to create her Big Cats, Sea and Shells and modern Botanicals series. Her ability to capture stunning details in an innovative way results in breathtakingly unique images of animals and nature.

In addition to her photography, Breidenbach has recently collaborated with Savel Inc. to create the Shelli Breidenbach Collection, her indoor/outdoor fabric line. Manufactured by Sunbrella, the line suits both traditional and contemporary settings with a hint of the equestrian lifestyle. Inspiration comes from her love of all things equestrian and her family life on a beautiful horse farm, Westmoreland, in Bedford, NY. Breidenbach's images can be found in Ralph Lauren collections around the world, and in the homes of private collectors throughout the United States.



VENDOR VILLAGE

WEF OFFICIAL BOUTIQUE

- Alessandro Albanese
- Anne Gittins Photography
- Charles Ancona NY
- CM Hadfields Saddlery Inc.
- CWD Custom Saddles
- DeNiro Boot Company
- Der Dau Custom Boots
- Dover Saddlery
- EQ Exchange
- Equestrian Essentials
- Equiline Equestrian Fashion
- Equisense
- Equstar LLC
- Equine Tack & Nutritionals
- Equis LLC
- Equo
- Eyes of Wellington
- F.LLI. Fabbri Inc.
- Fab Finds by Sarah
- Groom Bathing Tablets
- Helite Equestrian USA
- Horseware Ireland
- HorsePower Technologies Inc.
- James Leslie Parker Photography
- Jennifer on the Avenue
- Jods Equestrian Apparel
- Kocher Tack Shop
- Le Fash
- MK Horse Walkers
- Nightwatch
- Personalized Products
- Running Fox Equestrian
- Sofie's Boutique
- Snaks 5th Avenchew
- Sport Horse Essentials
- Stephex Horse Box
- Tack n Rider
- Tony Hanley Horse Supplements
- Turner & Co.
- Voltaire Design Fine Saddlery

RING 6

- Antarès Sellier France
- Horse Gym USA
- Saratoga Stalls
- Wellington Agricultural

BARN 1-4

- Dandy Products
- Farmvet Inc.
- RC Saddle & Tack Repair
- Woody's Shoe Repair
- Josey's Laundry Service

INTERNATIONAL WARM-UP ARENA

- Animo USA
- Bruno Delgrange Custom Saddles
- Equitan Flooring
- Wellington Agricultural

RINGS 9 & 10

- Barn Savers
- Devoucoux Saddles & Tack
- HayGain
- McGuinn Farms Inc. Tack Trunks & Stable Equip.
- Prestige Italia USA
- SportFot USA
- Stephex Horse Box

TIKI TERRACE

- | | | |
|--------------------------------|-----------------------------|---------------------------|
| WEF OFFICIAL BOUTIQUE | Elizabeth Locke Jewels Inc. | Une Belle Trouville |
| Blair's Belts | Goldmund | Via Luca Italian Menswear |
| Carson & Co. | Hermès | W.M. Baldwin Designs |
| Christian Schwartz Photography | Manatash Millinery | |
| Claire Christie Fine Art | Moonlight Diva Emporium | |
| David Erdek Photography | Sandra Meyer Art Gallery | |
| Davin Artphoto Inc. | Tocci Designs | |



PALM BEACH INTERNATIONAL EQUESTRIAN CENTER (Main Grounds)

FARM STAND

- FOOD TRUCKS & RETAIL**
- Meraki Juice Kitchen
 - Pumphouse Coffee Roasters
 - Tess & Co
 - The Shop at Farm Stand
 - Hunt Ltd.
- WELLNESS**
- Chiropractic
 - Massage & Body Work
 - Craniosacral Therapy
 - Active Isolated Stretchin Yoga

HUNTER HILL

- Danny & Ron's Dog Rescue
- Fab Finds by Sarah
- Hingham Square Needlepoint
- Just FUR Fun - Goodies for Dogs
- KPW Art Show
- Lauracea Ltd
- Pinnell Custom Leather Inc.

RING 11 (Pony Island)

- Palm Beach Int'l. Academy

BRIDGE DECKS

- American Rhino
- Trailerfash
- Vestrum
- VQ Jewelry

PLACES TO EAT

- | | |
|-------------------------------|------------------------|
| INTERNATIONAL ARENA | BARN 4 |
| Tito's Tacos | Burgess & Clark Coffee |
| Tiki Hut | PONY ISLAND |
| VENDOR VILLAGE | Tito's Mexican |
| Harry's Lemonade | SOUTH BARN |
| Loopy's Crêpes Café | Ted's Take Out |
| Oasis Café | |
| RINGS 9 & 10 | |
| Muddy Paws Coffee | |
| PCI, Professional Concessions | |
| Magdalena's Mexican | |
| Nathalie's Café | |

THE SHOPPES AT INTERNATIONAL CLUB

- Equiline Equestrian Fashion
- Hunt LTD
- Julie Keyes Art Consulting
- Karina Brez Jewelry
- Lugano Diamonds

AMATEUR HOUR

During the 2018 season of WEF we featured some of our amateur riders competing around the PBI EC grounds. Now while we countdown to 2019, we wanted to check in with some of those amateurs to see what they did this Summer and if they are returning to Wellington next year!



LIZ MALONEY
Franklin, MA

Remember Liz Maloney? She is an equine sports medicine veterinarian that owns her own practice in Massachusetts. She travels back and forth each week during circuit to see patients and compete. Liz participated in the Adult Jumpers, Low Amateur Jumpers, and Medium Amateur Owner Jumpers last season.

ARE YOU COMING BACK TO WEF THIS YEAR?
"Yes, all 12 weeks again!"

WILL YOU BE BRINGING ANY NEW HORSES THIS SEASON?

"Yes, I just picked Empire, a handsome 9-year-old from Holland, this past weekend! Taylor Flury found him for me. I'm hoping he'll teach me how to do the High Amateur Owners this winter. At my age, people usually start going down a level, but I'm still working on going up! I'll also be bringing my 10-year-old gelding Hero, my 9-year-old mare Calida, and my semi-retired 18-year-old gelding Quadrifoglio because I can't bear to leave him at home alone."

HOW WAS THE REST OF YOUR 2018 SHOW SEASON?

"I don't do too many competitions outside of WEF, maybe one horse show a month. I like to use the summer to hone my riding skills and practice so I'll usually try to do several clinics with George Morris. It's easier for me to compete at WEF, because I don't have to worry about trailering anywhere, setting up stalls, etc. I can just fly in to PBI and drive to the barn! I stay busy the rest of the year to make the money to pay for WEF."

WHAT WAS A BIG ACCOMPLISHMENT THIS SUMMER FOR YOU?

"Well, in one of his clinics this summer, George Morris told me that my course was "perfect." I think that's a pretty big accomplishment coming from George!"

WHAT IS YOUR FAVORITE PART ABOUT WEF?

"I love that I can build on my relationship with my horses at the same venue every week. I don't have to worry about all of the extra variables of going to a different horse show venue like getting the horse relaxed or learning where to go. I can really focus on my riding and my horses."

WHAT IS A PIECE OF ADVICE YOU WOULD GIVE TO ANOTHER AMATEUR WHO HAS NEVER COMPETED AT WEF BEFORE?

"Probably to bring a couple credit cards! Haha, no I'd tell them to take advantage of their down time to watch the schooling area of the Grand Prix ring. Watch how some of the best riders in the world prepare their horses before competing. There's not many places you can do that on a weekly basis."



**Sarah Holmberg
Sculptures**
KEYES ART
Wellington Equestrian Center
International Club and VIP
www.juliekeyesart.com 917 509-1379



The Veve Clicquot Suites

at The Palm Beach International Equestrian Center
3400 Equestrian Club Drive, Wellington, FL 33414 • www.pbicc.com

Experience the excitement of Saturday Night Lights Grand Prix show jumping at the Palm Beach International Equestrian Center. The Veve Clicquot Suites offer a spectacular new setting to watch the largest Grand Prix class of the week as top equestrian athletes and future Olympians compete for international titles during the 2018 Winter Equestrian Festival season.

Included in your ticket is a full buffet and open bar for \$150.00 per person for a regular show and \$200.00 per person for a 5* show.
Specialty Bottle Pricing Available for Veve Clicquot.

The Suites are available for the following Saturday Night Lights Events:

Regular Shows: January 12, 19, 26 • March 2, 16, 23
5* Shows: February 9, 23 • March 9, 30

For more information and booking please e-mail suites@equestriansport.com

GLADIATOR POLO 2019 SCHEDULE

- Friday, February 15**
6:00- Gladiator Polo #1 (South)
7:30- Gladiator Polo #2 (North)
- Friday, February 22**
6:00- Gladiator Polo #3 (North)
7:30- Gladiator Polo #4 (South)
- Friday, March 1**
6:00- Gladiator Polo #5 (South)
7:30- Gladiator Polo #6 (North)
- Friday, March 8- NO POLO EVENT**
- Friday, March 15**
6:45- Gladiator Polo #7 (North)
8:15- Gladiator Polo #8 (South)
- Friday, March 22- NO POLO EVENT**
- Friday, March 29**
6:45- Gladiator Polo #9 (South)
8:15- Gladiator Polo #10 (North)
- Saturday, April 6**
6:45- Gladiator Polo #11 (North)
8:15- Gladiator Polo #12 (South)
- Saturday, April 13**
6:45- Gladiator Polo #13- Consolation Match
8:15- Gladiator Polo #14- Final (North vs. South)

TO PURCHASE VIP TICKETS PLEASE CALL 561-838-3409
International Polo Club | 3667 120th Avenue South | Wellington, FL 33414

BWH
**ANN ROMNEY CENTER
FOR NEUROLOGIC DISEASES**

YOU ARE INVITED

LUNCH & LEARN
Join Ann Romney and world-renowned medical experts from Brigham and Women's Hospital in Boston for a lively discussion about innovations in neurologic disease research and tips about how to maintain a healthy brain.

**Friday, January 11, 2019
11:30 am-1:00 pm**
Palm Beach International Equestrian Center
Wellington Club
3400 Equestrian Club Road
Wellington, Florida

**BRIGHAM HEALTH
BRIGHAM AND WOMEN'S HOSPITAL** **HARVARD MEDICAL SCHOOL
TEACHING HOSPITAL**

SAVE THE DATE
**BROOKE USA'S SUNSET POLO™
& WHITE PARTY**

FRIDAY, MARCH 22
5:30PM-11:00PM
THE WANDERERS CLUB • WELLINGTON, FLORIDA
EVENTS@BROOKEUSA.ORG • BROOKEUSAEVENTS.ORG



JULIANA OLIARO
Newtown, CT

HOW HAS THE REST OF YOUR 2018 SHOW YEAR BEEN SINCE WEF?

"It went pretty well! I mainly competed at local shows this summer. Brandywine was probably the farthest show I went to."

HOW MANY WEEKS WILL YOU BE AT WEF THIS SEASON?

"I'll be there for ten weeks, same as last season."

WILL YOU BE BRINGING ANY NEW HORSES THIS SEASON?

"Yes, I actually got another horse, Ransome. We just started showing together and I'll be bringing him to WEF this year. He's a 13-year-old warmblood gelding who's done everything from the juniors and AO's to the derbies. He's a really good boy. I'm super excited about him!"

WHAT'S YOUR FAVORITE PART ABOUT WEF?

"My favorite part about WEF is definitely Saturday Night Lights. Being able to watch the professional riders under the lights while hanging out with my friends, trainers, people from different barns, and meeting new people is something I always look forward to."

WHAT ADVICE WOULD YOU GIVE TO ANOTHER AMATEUR WHO HAS NEVER COMPETED AT WEF BEFORE?

"My piece of advice is to be confident in yourself. Don't worry about placing there your first week. Just focus on the experience and have fun. I know being surrounded by so many amazing riders can be really stressful and overwhelming at first, but you can't get too caught up in the competition. After getting used to everything, you realize that while it is a big deal, your stress is more than it needs to be."



PETRA SOBOTOVA
KARLOVY VARY, Czech Republic

HOW HAS THE REST OF YOUR 2018 YEAR BEEN AFTER WEF?

"I actually had a really good summer. We started off with a win at Split Rock in the Low Amateurs, then had great results in Kentucky and Traverse City. Then we did another trip to Split Rock where we picked up another win. After that, we headed to Tryon, NC and did two weeks there where my horse Keboob won three times in a row. He took home Champion both weeks there! Summer is definitely our best season, but I am hoping to continue this good streak into WEF this year."

WHAT ARE YOU LOOKING FORWARD TO MOST FOR THIS WEF SEASON?

"I would love to move up to the Mediums. I did one class this summer in the Mediums and we ended up going clear and placing so that will be in the cards this season. I also just want to continue to be consistent. I am in law school at Miami, so I drive up here to compete."

HOW DO YOU BALANCE LAW SCHOOL AND SHOWING?

"This is actually my third year and I am graduating in May! So, I have been balancing showing and school for a while. The first year was the toughest, because they did not let us create our own schedules. Since then, however, I just schedule my classes on Tuesday/Thursdays or Monday through Wednesdays so I can drive up here and stay. It's good, I like to stay busy."

DO YOU HAVE ANY SPECIAL HORSES YOU ARE LOOKING FORWARD TO SHOWING THIS SEASON?

"Yes, that would be Keboob, but his show name is "Shish Kebab", because he is a winner-winner chicken kebab dinner. He has just come off a series of wins. He is a winner at heart too. When you are in the jump-off he is just waiting for you to tell him where to turn and he is ready to run for it. It is really fun to have a horse like him when the classes become so competitive at WEF when even placing in the lows is an accomplishment. Fingers crossed he is the one I will hopefully be moving up on."

Please turn to page 14

ULTIMA
Complimentary
Week Pass

Official Fitness & Wellness Center Of

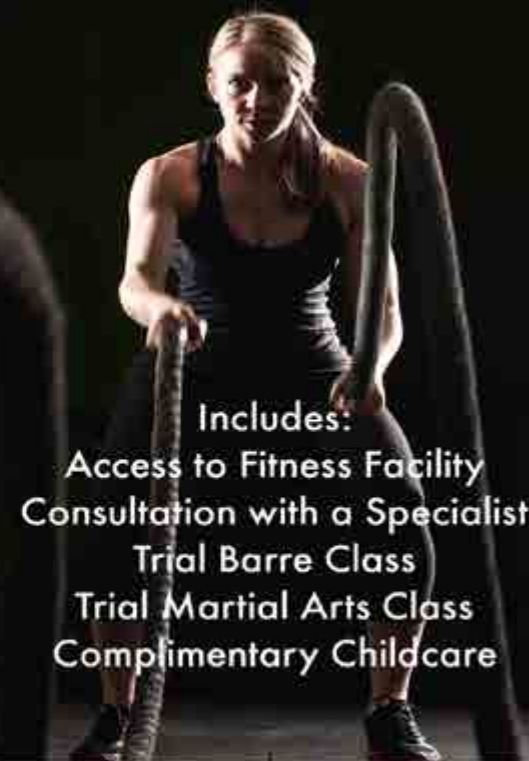


PALM BEACH INTERNATIONAL
EQUESTRIAN CENTER

12799 W. Forest Hill Blvd Wellington FL 33414
info@ultimafitness.com | 561-795-2823

Instagram Facebook Ultimafitnesswellington

THE ULTIMA EXPERIENCE:



Includes:
Access to Fitness Facility
Consultation with a Specialist
Trial Barre Class
Trial Martial Arts Class
Complimentary Childcare

ULTIMA



Rosenbaum PLLC is a full-service law firm providing its clients the highest quality legal services. We combine big firm expertise with small firm flexibility.

- Business Law
- Employment Law
- Government Law
- Construction Law
- Land Use Law
- Insurance Law
- Equine Law
- Real Estate Law
- Trials and Appeals



Rosenbaum PLLC
250 S. Australian Avenue, 5th Floor, West Palm Beach, FL 33401
rosenbaumpllc.com | 561-653-2900



WWW.Footingdrag.com
888-369-1444
Synthetic conventional footing

MINI DRAGFLY	THE DRAGFLY	DRAGFLY PRO
The Mini Dragfly has an open cage roller on the front, next there is three rows of lines that work like fingers to mix and spread the surface keeping the footing from clumping, giving an ultimate mixing effect of the surface. This drag is designed to mix the surface only. This drag can not dig, working great for shallow footing surfaces. It can be pulled behind ATV, golfcart etc. or small compact tractor. Sizes D60" D72" D84" D96"	The unique design of the Dragfly features a row of adjustable aggressive ripper teeth that are offset, having a working depth of up to 4 inches. The teeth are designed with a curve on the bottom to roll unused footing to the surface. The rear two rows of mixing lines are off set and can be adjusted by a manual ratchet. The mixing lines work like fingers to mix & spread keeping the footing from clumping, giving an ultimate mixing effect of the surface. The rear bar roller rolls the material back down leaving an attractive pattern finish. The Dragfly handles all types of footings. The Dragfly can easily be pulled with small tractor, ATV,UTV,Golfcart etc. sizes D60", D72", D84", D96"	The Dragfly PRO removes and conditions conventional and synthetic footings on horse riding arenas and tracks. Since this groomer handles all types of footings there is no need to buy multiple groomers when you change the footing surface in your arena. The Dragfly PRO adds unique features over the Dragfly. The 3 Point Hitch allows for easier turning without throwing the footing. Coupled with a compact length, the groomer allows tight turns around jumps with a relatively low horsepower requirement. Sizes D72", D84", D96"

Horse Treadmill available for sale!
Starting at \$29,750.00
Options: Incline available
Treadmill Features include:
Speed control, laser safety features.
Horse friendly features:
Horse will be able to set its own pace.
Start, stop horse friendly.
User friendly! Financing available!

AMATEUR HOUR

continued from page 13

WHAT IS YOUR FAVORITE PART ABOUT WEF?

"I mean, I can't complain about the shopping. It is also like a home base for everyone. You know all of your friends are in town and you can eat lunch at the horse show. It is almost a sense of normal life when you get to see your friends during the day unlike summer shows where you have no idea who is in town. It is kind of like being at home.

It is also nice that there is so much competition. It really pushes you to be your best when you are competing against 100 people."

WHAT IS A PIECE OF ADVICE YOU WOULD GIVE TO A FELLOW AMATEUR WHO HAS NEVER COMPETED AT WEF BEFORE?

"I would say to pace yourself. It is so fun and there is so much, but by the end of season you can be really tired if you don't pace yourself. You also want to keep your horses fresh. You don't want to show every weekend in the beginning and be tired at the end. So, pace yourself and enjoy every minute because after that you have to go to cold places!"



TRYON
INTERNATIONAL EQUESTRIAN CENTER
DINING | EVENTS | LODGING | SHOPPING

FEATURING
12+ weeks AA/Premier Hunter Competition
9+ weeks of FEI CSI Jumping Competition

MARCH - NOVEMBER 2019

4066 Pea Ridge Road, Mill Spring, NC 28756 | (828) 863-1000 | www.Tryon.com

WORLD-CLASS SHOW JUMPER HORSE AUCTION

Bid Online Feb 19-26
Preview & Auction Details at cwsmarketing.com

horseauction@cwsams.com
855-463-3183
CWSAMS

14 HORSES

HORSES INCLUDE:

- Bonjovi
- Hardrock Z
- Boy IV
- Reus De La Nutria
- Ricore Courcelle
- And More!

On behalf of the US Treasury Department in conjunction with Homeland Security Investigations.

WE ALL DESERVE PROTECTION FROM STORMS & HURRICANES!

Save on energy bills, lower your insurance, and ... Increase protection from storms & intruders, for everyone you love

561-220-2423

or visit wrightswindow.com/offerwell

WRIGHT'S
IMPACT WINDOW & DOOR
Protect your home the Wright way

wrightswindow.com

44 YEARS EXPERIENCE SERVING SOUTH FLORIDA



INTERNATIONAL POLO CLUB 2019

20 GOAL Herbie Pennell Cup - 20 Goal December 30, 2018	C.V. Whitney Cup - 22 Goal February 13 - 24, 2019	February 24 - March 24, 2019
Joe Barry Cup - 20 Goal January 3 - 13, 2019	Butler Handicap - 22 Goal February 17, 2019	Gay Polo League™ Tournament April 4 - 7, 2019
Ylvisaker Cup - 20 Goal January 11 - February 10, 2019	U.S. Women's Open Final March 23, 2019	U.S. Open Polo Championship™ 22 Goal March 27 - April 20-21, 2019
The Lucchese 40 Goal Challenge February 16, 2019 22 Goal	USPA Gold Cup™ - 22 Goal	

INTERNATIONAL POLO CLUB PALM BEACH
3667 120th Ave. South | Wellington, FL 33414 | internationalpoloclub.com | 561.204.5687

The Bellissimo Family & Wellington Equestrian Partners cordially invite you to the most entertaining community celebration in Wellington during the 2019 season!

The Great Charity Challenge presented by Fidelity Investments® has raised more than \$12.2 million for over 230 Palm Beach County charities since its inception in 2010.

GREAT CHARITY CHALLENGE
Presented by **Fidelity**

We are the World
Saturday, February 2, 2019
Gates open at 6 PM • Competition begins at 6:30 PM

Join us as we celebrate unity at Palm Beach International Equestrian Center with an array of Palm Beach County charities competing for more than \$1 million in prize money.

Featuring
Carousel • On-Site Dining Options • Family Fun Activities
Petting Zoo • Wellington School Art Activities

For event, sponsorship and ticketing options, please contact
Anne Caroline Valtin at (727) 678-8677 or acv@greatcharitychallenge.com

PALM BEACH INTERNATIONAL EQUESTRIAN CENTER
13500 Southshore Blvd • Wellington, FL 33414 • www.greatcharitychallenge.com

FREE GENERAL ADMISSION FREE PARKING



ESTD. 2014
KPW PRODUCTIONS
PRESENTS AN
ART SHOW
FEATURING **SUNNY STACK GOODE**
@SUNNYGOODEARTIST
Hunter Hill | Winter Equestrian Festival
at the Palm Beach International Equestrian Center
JANUARY 9TH - 20TH, 2019



\$3.1mm
15755
Boeing Court
Wellington,
Florida



\$4.9mm
14310
Calypso Lane
Wellington,
Florida










maria mendelsohn
 FINE EQUESTRIAN AND LUXURY PROPERTIES
 SPORTS & ENTERTAINMENT • EQUESTRIAN REAL ESTATE
 561.758.1605 • MARIAMENDELSOHN.COM


Douglas Elliman
 REAL ESTATE

BATTLE OF THE SEXES

SATURDAY
JAN. 12

PRESENTED BY

**Wellington Regional
Medical Center**

FREE GENERAL ADMISSION | PARKING \$20/CAR | GATES OPEN AT 6 P.M.
 PBIEC | 3400 EQUESTRIAN CLUB DRIVE • WELLINGTON, FLORIDA • (561) 793-JUMP • WWW.PBIEC.COM