



THE
COLORADO
HORSE PARK

Presents:



Snowflake Series Schooling Shows



"It's a whole new thing"

*Over \$6,000 in prize money
for the series!*

This prize list applies to January and February

January 21-22

February 18-19

*The April and May prize list will be released
with the CHJA show Prize lists*

April 15-16 in conjunction with KSMS Welcome to Spring CHJA
show

May 6-7 Series Final in conjunction with the Meridian CHJA show

It's a Whole New Thing at The Colorado Horse Park!

On behalf of the team at the Colorado Horse Park, we look forward to welcoming you to our Snowflake Series in 2017.

As we embark on a new and exciting season for the CHP, we are proud to expand our event offerings to welcome this new and expanded schooling series. The Park proudly supports disciplines and equestrians of all ages and experience levels. We aim to encourage growth of our Colorado equestrian industry both locally through offering this series that centers around fun, horsemanship, sportsmanship and competition, and nationally through our initiatives for **education:** Lunch & Learn, Ride & Learn and new Dressage Symposium in the Rockies and **competition:** Snowflake Schooling Series, CHJA, AA shows and the exciting announcement of FEI events for our three core disciplines: Eventing (CCI), Dressage (CDI) and Jumping (CSI).

The Snowflake Series is open to riders of all ages. Competition classes address both skills in the saddle and in the classroom. Special awards for sportsmanship will be awarded.

At each show, the division champion (for all divisions that champion, not to include the Variable Mini Prix's), will receive a \$50 cash prize. The series will also offer circuit prizes, with each Snowflake Series Division Champion receiving a \$100 cash prize. Gifts and non-cash prizes will also be awarded.

Thank you for supporting the Snowflake Series! We look forward to seeing you show off your talent and horsemanship knowledge this winter, and most importantly, have fun and make new friends.

Best wishes,

Meg Krueger
Chief Operating Officer



**Show Officials for each show will be announced
as they become known.**

Judges :

January: Janet VonDrehle
February: Ann Fouret

Course Designers:

January TBA
February TBA

Announcer: Shawnda Zapata
EMT

January: Lee Watts
February: Janet Von Drehle

Show Secretary:

Carole A. Kenney
303-910-9410



Show Manager:

Carole A. Kenney

Gate:

Javier Zapata

Facility Addresses:

Colorado Horse Park

Please enter through the Bayou Gulch entrance to access biosecurity.
See later page for requirements.

7375 E. Bayou Gulch Rd
Parker, CO 80134

Contact: Carole Kenney
303-910-9410



SHOW RULES

Entries will be accepted on the day of show. However, early entries make for a more enjoyable show for everyone and earn a discount. Please enter early!

Fees:

- Regular classes \$18.00
- EMT Fee \$15.00 per rider
- Office Fee \$15.00 per entry
- Stalls \$35.00 lower barns
- Grounds Fee \$15.00
- Early Entry Discount! -\$2.00 per class.

Must be entered by the Thursday prior to the show by 6:00 pm and only classes on the entry form at the time of submission receive the discount.

1. All fees should be made payable to the payee listed on the entry form for each show.
2. No refunds will be given unless accompanied by a veterinarian's certificate.
3. Stalls will be available for a fee of \$35.00 per day/night. The stalls will not be bedded. Please call the Carole to reserve. Just noting it on your entry form is not adequate, you must call. Carole Kenney 303-910-9410
4. Any returned checks must be paid in cash or certified funds within 10 days.

Regulations:

1. Back to back rounds allowed and encouraged.
2. No-judges will be allowed if time permits.
3. Hard hats must be worn at all times by all riders while on the show grounds.
4. Controlled schooling will be allowed from 7:00 am - 8:15 am. Schooling times on any one horse may be limited if other horses are waiting.
5. The show management reserves the right to cancel, combine or divide any class(es) should it be in the best interest of the show.
6. Only one horse per entry form.
7. A one minute gate and/or a posted order of go may be imposed by management in order to maintain a reasonable pace for the show ring.
8. Each class will award a first place trophy and ribbons through sixth place.
9. Champion and Reserve will be offered for all divisions.
10. Pets must be on a leash at all times!
11. All Mini Prix classes must have a minimum of 5 riders for the money to be paid.

Possible tests for the medal classes:

The top 4 riders over fences may be called back for further testing if necessary.

Some tests will take place in the show Office and will be verbal and/or skills tests.

(** Can be done outside the show arena and scored by other show officials to expedite)

Walk Trot Division

Sit the trot

Post the trot

Change diagonal across the center

Demonstrate a two point position

Drop and pick up stirrups

Drop and pick up reins

**Identify certain grooming tools (Create a sample board)

Pile of Poles Division

All of the above plus:

**Remove and replace a bridle

**Remove and replace a saddle

** Hoof picking

Trot a figure 8

Halt

Dismount and lead horse out of arena

Cross Rails Division

All of the above plus:

Pick up the correct lead at the canter

Demonstrate a simple change of lead

Demonstrate a flying change of lead

**Fill out an entry blank

Dismount

18" - 2' Division

All of the above plus:

Cross stirrup work

Show different releases

**Identify certain equipment (bits, parts of bridle, saddle, martingales

**Demonstrate checking safety of tack. Check stirrup leathers, girths, billets for damage.

**Demonstrate wrapping or application of boots

Above 18" level USEF tests 1-9 will apply and all tests will be in the arena.

BIOSECURITY AT THE COLORADO HORSE PARK

Required:

Negative Coggins within one year.

Health Certificate within 10 days. This should include dates of vaccinations no later than 180 days

Vaccine records stating that EHV 1/4 were administered no later than 180 days prior to the show.

*ALL PAPERWORK MUST BE IN THE HORSE'S SHOW NAME!
PAPERWORK MUST BE CROSS CHECKED WITH THE ENTRIES. PRE-ENTRIES WILL MAKE
THIS POSSIBLE.*

The Colorado Horse Park takes biosecurity seriously and we impress that you do as well. PLEASE check your paperwork and make sure your vet re-issues paperwork if the horse's show name is not on it.

Horses may not unload until paperwork is turned in and approved. Stall assignments will not be assigned in advance. Stalls will be given by the show office upon arrival.

All horses must enter the facility off Bayou Gulch Rd. There will only be one entrance open and it will be the first entry east of Ponderosa High School and across from the church. ***No entrance for horse show trailers through the top gate on S. Pinery Dr.***

Friday entry must occur by appointment only.

Saturday and Sunday entrance 6:00 am – 2:pm

If you have any questions about this please call Carole A. Kenney, Equine Manager, Colorado Horse Park 303-910-9410

CHP PRE CHECK

Starting this year we will be offering CHP Pre-Check. Pre-Check consists of the owner submitting all paperwork a minimum of 24-48 hours in advance of the show, and upon approval, the owner shall receive a pass for each horse to be presented upon arrival at the biosecurity gate. This will speed up your entrance to the facility.

Please email all relevant documents to: ckenny@coloradohorsepark.com. Your passes will be emailed back to the address from which you send the documents.

SATURDAY CLASSES

SCHOOLING 7:00am Arena Start 8:00am

Walk - Trot Division Classes 1-3

1. Walk - Trot - Barely Canter Hunter (Canter Optional)
2. Walk - Trot - Barely Canter Hunter (Canter Optional)
3. Walk - Trot - Barely Canter Equitation Medal Class (Canter Optional)

Pile Of Poles Division Classes 4-8

4. Pile Of Poles Hunter O/F
5. Pile Of Poles Hunter O/F
6. Pile Of Poles Equitation O/F
7. Pile Of Poles Hunter U/S
8. Pile Of Poles Equitation Flat
9. Pile Of Poles Equitation Medal Class

Ten Minute Schooling Break

Cross Rails Division Classes 10-14

10. Cross Rails Hunter O/F
11. Cross Rails Hunter O/F
12. Cross Rails Equitation O/F
13. Cross Rails Hunter U/S
14. Cross Rails Equitation Flat
15. Cross Rails Equitation Medal Class

Ten Minute Schooling Break

Beginner Division Classes 16-20

16. Beginner Hunter O/F - (18" - 2')
17. Beginner Hunter O/F - (18" - 2')
18. Beginner Equitation O/F - (18" - 2')
19. Beginner Hunter U/S
20. Beginner Equitation Flat
21. Beginner Medal Class (18" - 2')

Ten Minute Schooling Break

Advanced Beginner Division Classes 22-26

22. Advanced Beginner Hunter O/F - (2'3"-2'6")
23. Advanced Beginner Hunter O/F - (2'3"-2'6")
24. Advanced Beginner Equitation O/F - (2'3"-2'6")
25. Advanced Beginner Hunter U/S
26. Advanced Beginner Equitation Flat
27. Advanced Beginner Medal Class (2'3"-2'6")

SATURDAY CLASSES
SCHOOLING 7:00am Arena Start 8:00am

Advanced 2'6"-2'9" Division Classes 28-32

- 28. Advanced Hunter O/F
- 29. Advanced Hunter O/F
- 30. Advanced Equitation O/F
- 31. Advanced Hunter U/S
- 32. Advanced Equitation Flat
- 33. Advanced Equitation Medal Class

Ten Minute Schooling Break

3" Division Classes 34-38

- 34. 3' Hunter O/F
- 35. 3' Hunter O/F
- 36. 3' Equitation O/F
- 37. 3' Hunter U/S
- 38. 3' Equitation Flat
- 39. 3' Equitation Medal Class
- 40. Pro/Am Derby Variable
- 41. Hunter Derby Variable

Variable fun classes (Ride at 2'6"-2'9" or 3")

JUDGE'S FORUM IN WARM UP ARENA -While the arena is being set for jumpers. 20 minutes to pick the Judge's brain.

JUMPERS- Not to start before 11:00 am

- 42. 18' Jumper
- 43. 18" Jumper
- 44. 18" Jumper
- 45. 2'-2'3" Jumper
- 46. 2'-2'3" Jumper
- 47. 2'-2'3" Jumper
- 48. \$500 Variable Mini Prix (18"-or 2'-2'3")
- 49. 2'6"-2'9" Jumper
- 50. 2'6"-2'9" Jumper
- 51. 2'6"-2'9" Jumper
- 52. 3'-3'3" Jumper
- 53. 3'-3'3" Jumper
- 54. 3'-3'3" Jumper
- 55. \$500 Variable Mini Prix (2'6"-2'9" or 3'-3'3")

***If the April and May shows
can be held outside, we will
be adding some extra fun
Jumper classes.***

Pairs Power and Speed

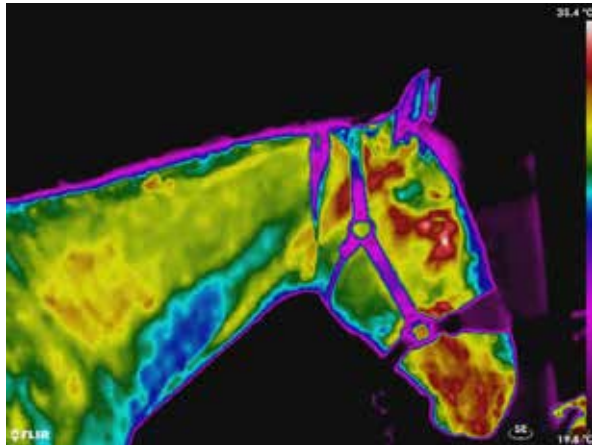
Rotating Rider

4 Bar

***Watch for announcements
at www.Kenneyshows.com
and for the release of those
prize lists!***

PLEASE THANK AND SUPPORT OUR SPONSORS!

Hidden Vision Thermographics



ENGEL & VÖLKERS®
GAYE BARRETT

2'6" – 2'9" Jumper Division sponsored by:



The 2'3"-2'6" Advanced Beginner Division sponsored by:





Administrative Office & General Public Entrance:

7522 South Pinery Drive | Parker, CO 80134

Horse Show & Horse Trailer Entrance:

7375 E. Bayou Gulch Road | Parker, CO 80134 (303) 841-5550

www.ColoradoHorsePark.com

